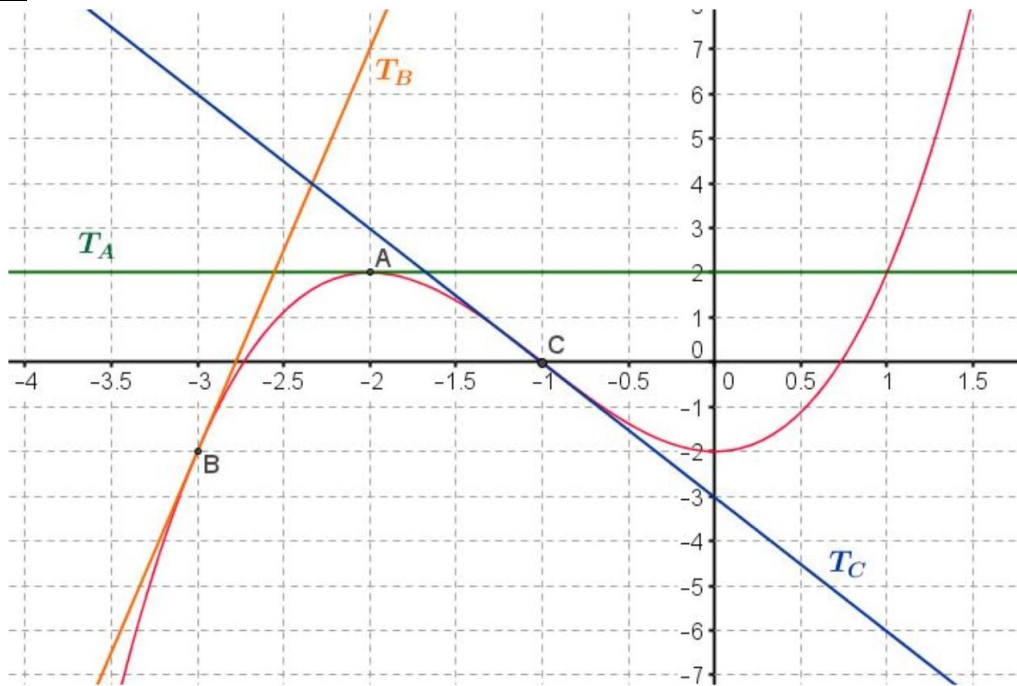


Valeur de la dérivée par lecture du coefficient directeur de la tangente

Exercice 3A.1 :



Par lecture graphique, déterminer :

$$f(-3) =$$

$$f'(-3) =$$

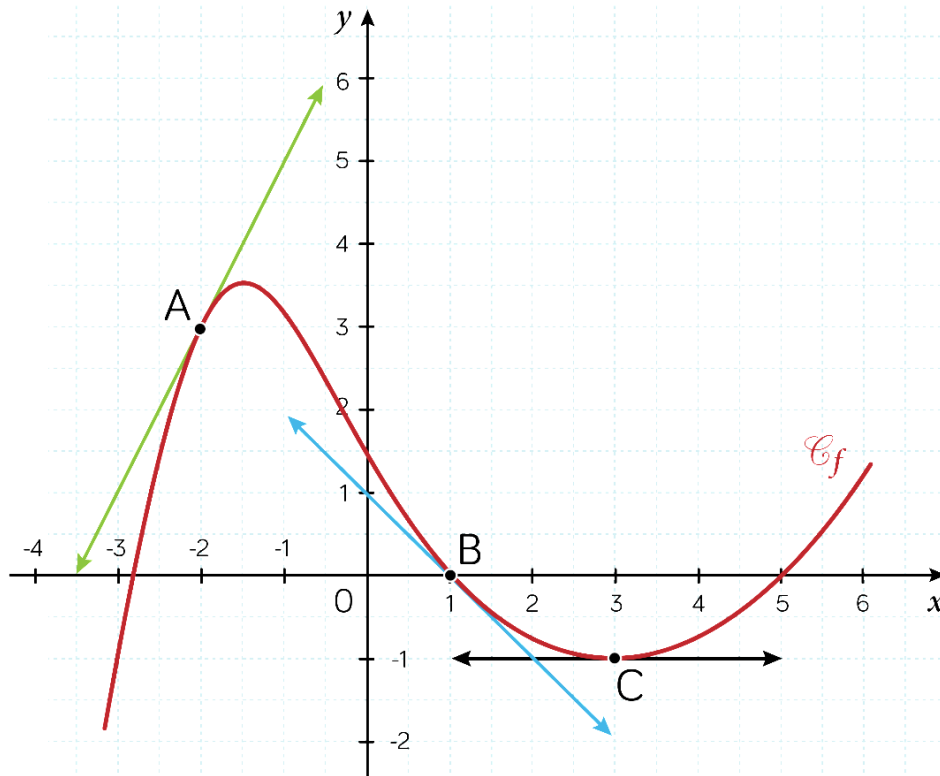
$$f(-2) =$$

$$f'(-2) =$$

$$f(-1) =$$

$$f'(-1) =$$

Exercice 3A.2 :



Par lecture graphique, déterminer :

$$f(-2) =$$

$$f'(-2) =$$

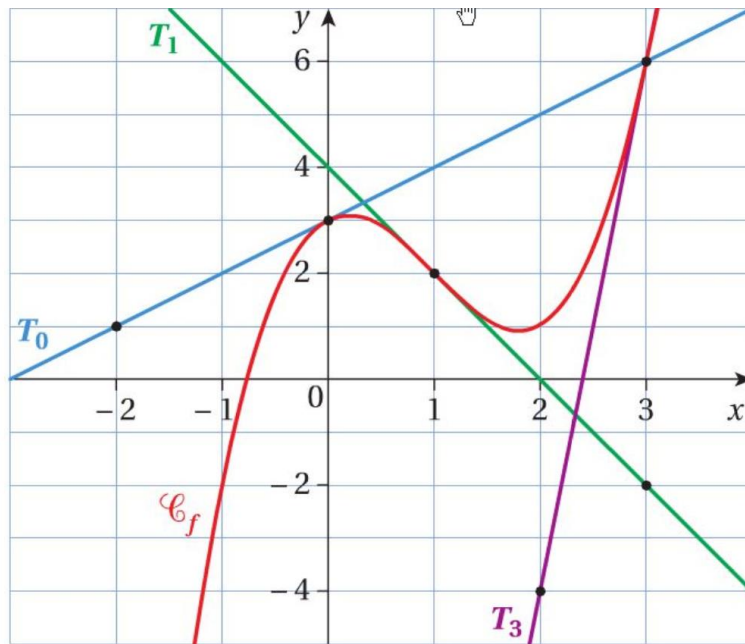
$$f(1) =$$

$$f'(1) =$$

$$f(3) =$$

$$f'(3) =$$

Exercice 3A.3 :



Par lecture graphique, déterminer :

$$f(0) =$$

$$f(1) =$$

$$f(3) =$$

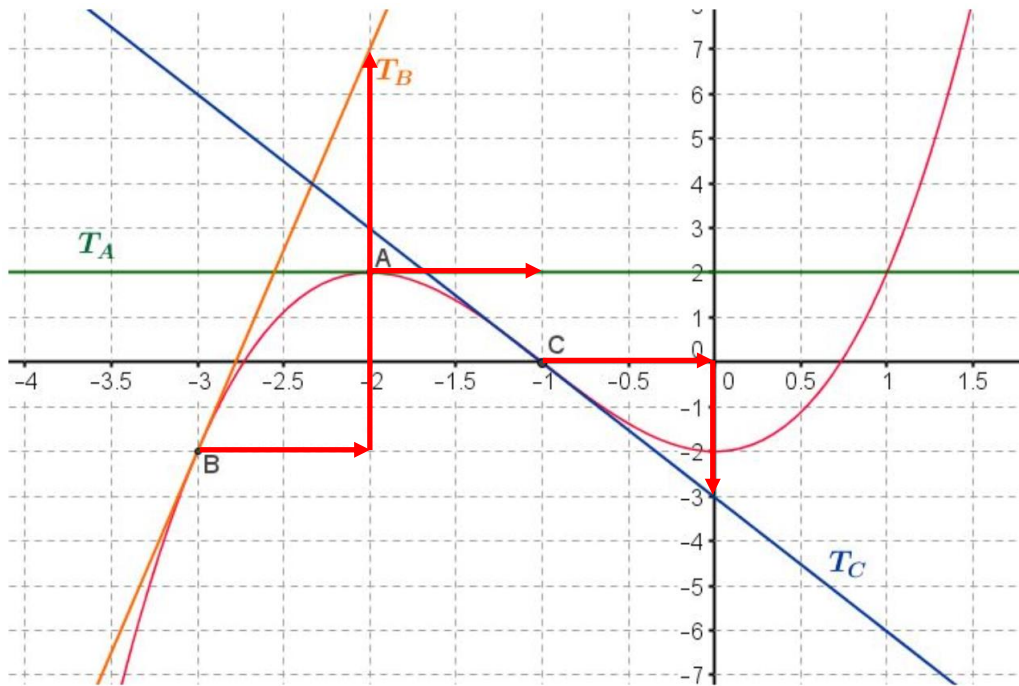
$$f'(0) =$$

$$f'(1) =$$

$$f'(3) =$$

CORRIGE – Notre Dame de La Merci – Montpellier

Exercice 1 :



Par lecture graphique, déterminer :

$$f(-3) = -2$$

$$f'(-3) = 9$$

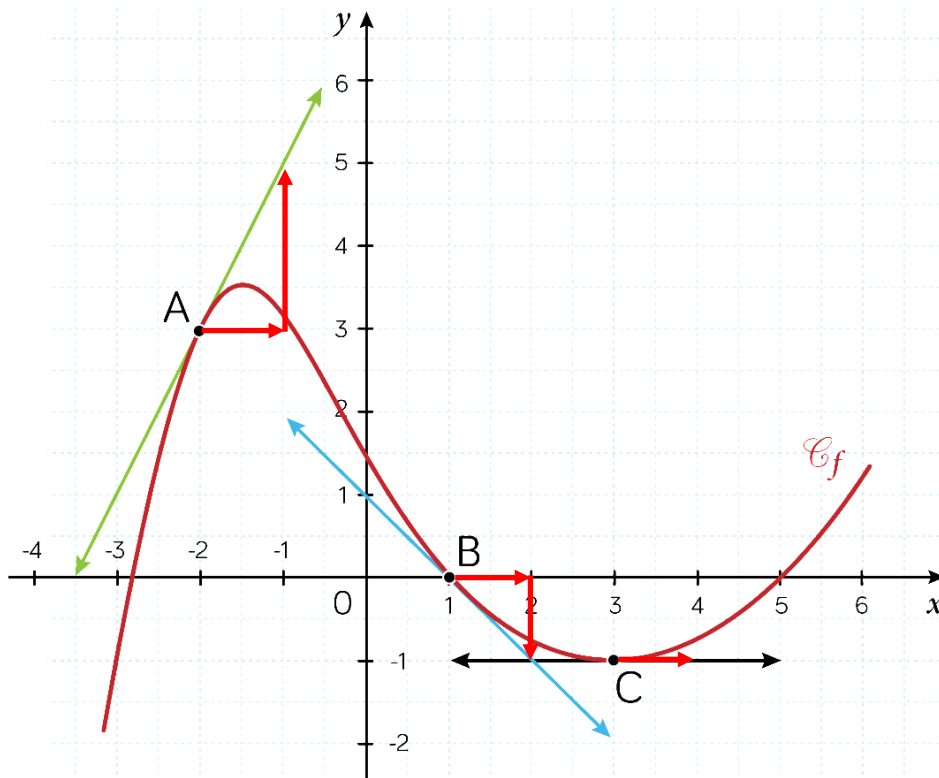
$$f(-2) = 2$$

$$f'(-2) = 0$$

$$f(-1) = 0$$

$$f'(-1) = -3$$

Exercice 2 :



Par lecture graphique, déterminer :

$$f(-2) = 3$$

$$f'(-2) = 2$$

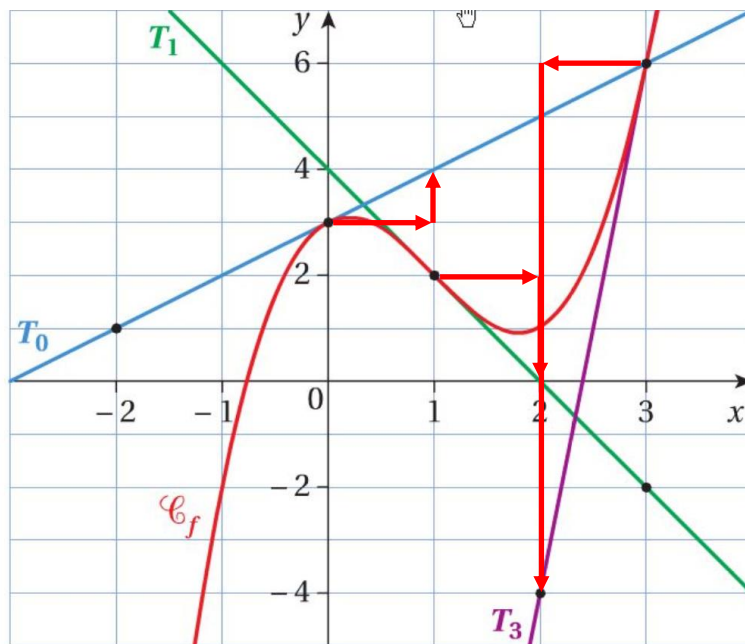
$$f(1) = 0$$

$$f'(1) = -1$$

$$f(3) = -1$$

$$f'(3) = 0$$

Exercice 3 :



Par lecture graphique, déterminer :

$$f(0) = 3$$

$$f'(0) = 1$$

$$f(1) = 2$$

$$f'(1) = -2$$

$$f(3) = 6$$

$$f'(3) = 10$$